

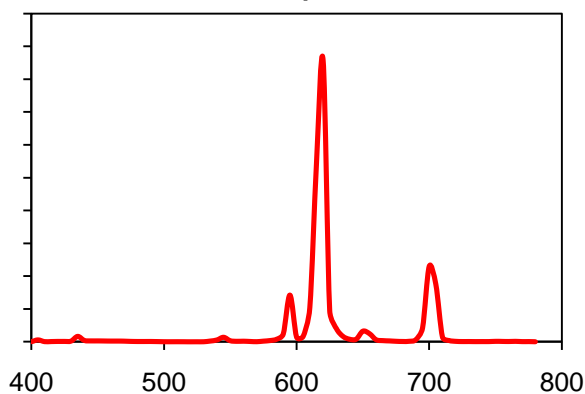
CCFL Datasheet: RV101™ (for High NTSC)



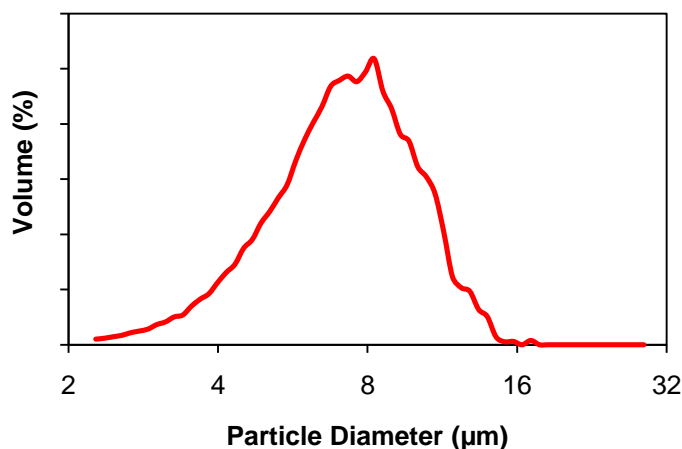
Product Description and Application:

- RV101 is designed for use in CCFL applications
- RV101 red phosphor is designed for red illumination devices and is used as one of the components in warm white with higher CRI, back light unit for display with higher NTSC, and other red color applications

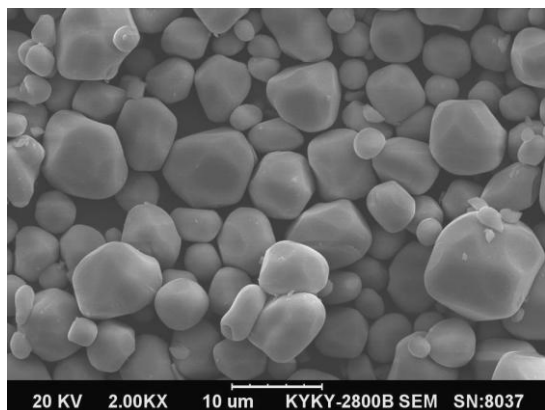
Emission Spectrum



Particle Size Distribution



Material Specifications:



Materials	YVOX (YVO ₄ :Eu)
Density	4.3 g/cm ³
Particle Size	D50V ~ 6.2 µm
CIE (1931)	x=0.6531, y=0.3249
Emission Peak	620 nm
Excitation Range	200 – 300 nm