

Product Brief

Intematix Tunable Lighting Module

The ability to independently control brightness and color enables new and unique lighting products and installations. Tunable across a broad range from warm to cool white while maintaining a CRI >90, the Intematix Tunable Lighting Module is a compelling new option for retail, hospitality, residential, education, museum, commercial, and architectural lighting. The module design supports end to end mounting, enabling unlimited lengths of continuous color tunable lighting. The compact LED spacing enables excellent color mixing and uniformity.

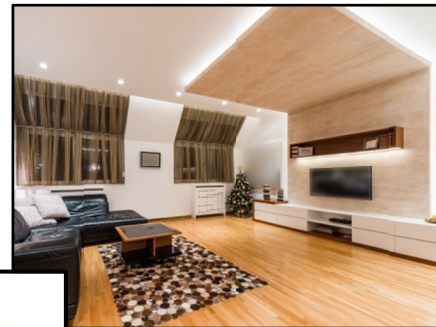
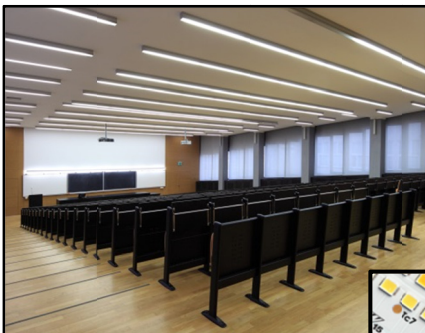
Capable of reliable operation at up to two times their nominal driver current, these modules are ideal for applications requiring extremely high lumen density. Length options of 11 and 22 inches reduce wiring and mounting steps and components, further reducing system costs. LM80 test data is available to accelerate the path toward DLC or Energy Star certification.

Product Features

- Integrated modular solution
- Color point tunable from 2700K to 5000K
- Minimum 90 CRI
- End to end mounting and daisy chain connectivity
- Reliable at 200% of rated input current
- 3 SDCM Color consistency
- 11 and 22 Inch length options
- 5 Year limited warranty

Application Benefits

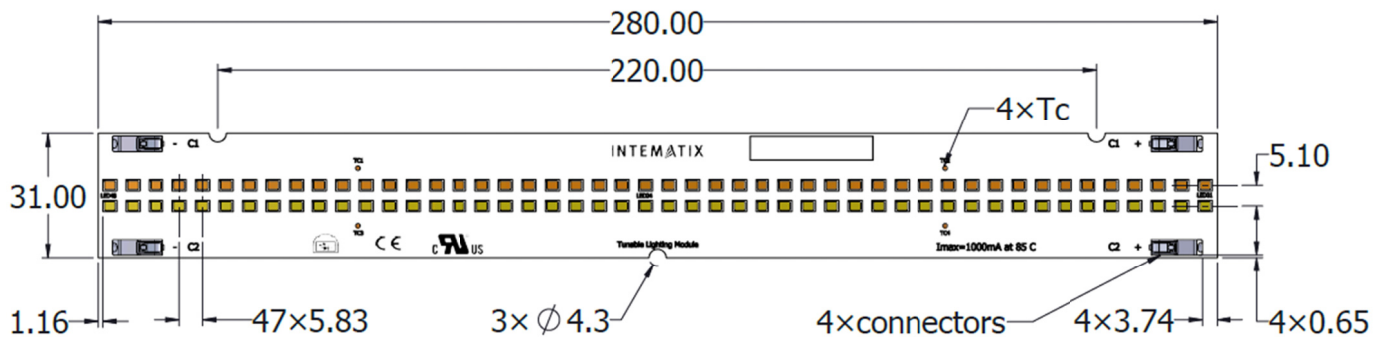
- Accelerates time to market
- Enables dynamic lighting and supply chain simplification
- Accurate color rendering
- Enables continuous lines of light
- Delivers high lumen density
- Uniform consistent lighting
- Reduced wiring and mounting costs
- Design with confidence



Optical and Performance Characteristics

Product	Length	Nominal CCT (K)	Min CRI	Typical LOP (lm)	Typical Efficacy (lm/W)	Rated Drive Current (mA)	Typical Forward Voltage (V)	Power (W)
ILM-TL01-92750-1600-0280	11 Inch 280 mm	2700	90	1600	129	500	24.8	12.4
		5000	90	1675	135	500	24.8	12.4
ILM-TL01-92750-3200-0560	22 Inch 560 mm	2700	90	3190	129	1000	24.8	24.8
		5000	90	3350	135	1000	24.8	24.8

Electrical and Mechanical Interconnects



Product	Length	Width	Max Height
-0280	280mm / 11"	31mm 0.95"	6.1mm 0.24"
-0560	560mm / 22"		

Notes:

- 1) Drawing example shown for -0280 product
- 2) Input wire cross section is 18-24 AWG with a terminal strip length of 7-9mm

Please contact a sales representative for additional product details.
For more information contact sales@intematix.com.

All rights reserved. Specifications subject to change without notice. Last updated October 1st 2017.

INTEMATIX